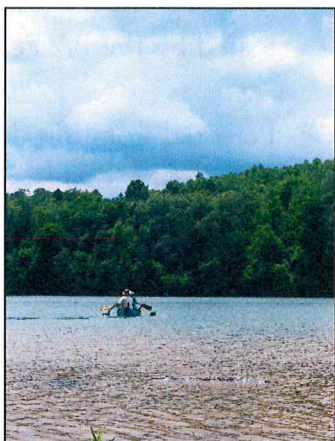


Who we are:

The Cambria Somerset Authority (CSA) is a municipal authority formed by the Boards of Commissioners of Cambria and Somerset Counties to purchase and operate the former Manufacturer's Water Company (a subsidy of Bethlehem Steel). CSA maintains Wilmore, Hinckston Run and Quemahoning surface water reservoirs and two river intake dams: Border and South Fork, as well as over 5,000 acres of land.



What we do:

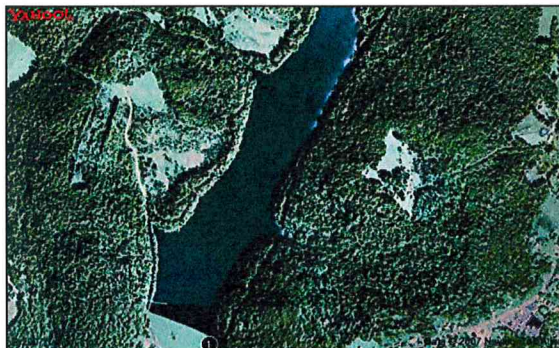
1. Sole provider of high-quality industrial water for Cambria and Somerset Counties
2. Provide diverse recreation opportunities to enhance quality of life in the region
3. Practice conservation of our natural environment to ensure its availability for future generations

Directions to the Hinckston Run Reservoir – East Shore, Picnic Area and Boat Launch:

Please note posted speed limits!

From Blairsville/Ebensburg and all points north:

- Take Route 22 to Mundy's Corner
- Take Route 271 South 5 ¼ miles
- Turn onto Hinckston Run Rd. near the village of Wesley Chapel
- Follow road to the Reservoir
- Hinckston Run Road loops back to Route 271 (South of Wesley Chapel)



** maps are available on CSA's website **

www.cambriasomersetwater.com

From Johnstown, Somerset and all points south:

- Take Route 56 into Johnstown
- Turn onto Walnut Street
- At the end of Walnut Street turn right onto Route 271 North
- Take 271 North for 5 ¼ miles
- Turn left onto Hinckston Run Rd. near the village of Good's Corner
- Hinckston Run Road loops back to Route 271 (North of Good's Corner)

HINCKSTON RUN RESERVOIR RECREATION AREA

Cambria County, Pennsylvania



Cambria Somerset Authority
Central Park Complex
110 Franklin Street, Suite 200
Johnstown, PA 15901
(814) 532-8851
FAX: (814) 532-8852
www.cambriasomersetwater.com



Fast Facts:



Area:

416 Acres

Average Daily Withdrawal:

0 - 5.0 MGD

Average Depth:

15-20 feet

Located In:

Middle and East Taylor Townships,
Cambria County, Pennsylvania

Water Allocation:

5.2 MGD (million gallons per day)

Water Storage:

1.1 billion gallons

Watershed Size:

10.8 square miles

Recreation Opportunities:

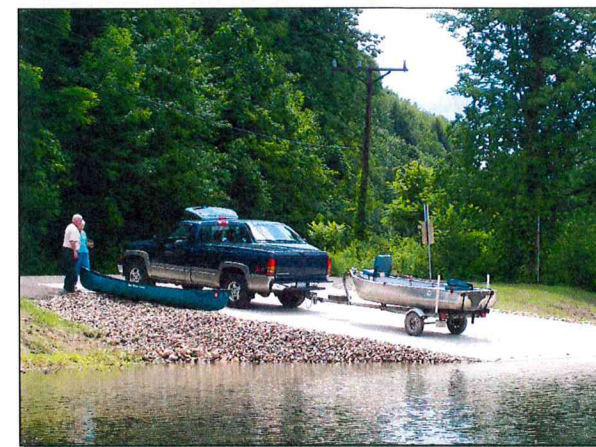
- ✓ Boating (no gasoline motors)
- ✓ Fishing
(must comply with PA Fish & Boat Commission Guidelines)
- ✓ Geocaching
(<http://www.geocaching.com/>)
- ✓ Hiking



- ✓ Hunting
(must comply with PA Game Commission Guidelines)
- ✓ Mountain Biking
- ✓ Trailer Boat Launch
- ✓ Picnic tables and Picnic Pavilion

Special Regulations:

- Properties are under cooperative agreement with PA F&BC and PA Game Commission; special regulations apply.
- No internal combustion engines or fuel storage containers allowed.
- Maximum boat length is 17 feet.
- All boats must possess a use permit issued by the PA F&BC or DCNR.
- Personal flotation devices must be possessed for all boaters.
- Trespassing or fishing at breast of dam is prohibited.



PLEASE HELP KEEP YOUR PARK CLEAN... CARRY OUT ALL TRASH!